

# A REVIEW OF THE ASIAN GENUS *TALA* MALAISE (HYMENOPTERA: TENTHREDINIDAE) WITH DESCRIPTION OF A NEW SPECIES

Malkiat S. Saini\* and Jagdeep S. Deep

\*(Corresponding author)

Department of Zoology, Punjabi University, Patiala, Punjab 147002, India.

## Abstract

Genus *Tala* Malaise has been reviewed. To the previously recorded only one species, one is added afresh. Described as new is *Tala smithi*. Treatment of each taxon includes synonymy (if any), detailed description, holotype depository, and collection data. A key to the known species is also given.

## Key words

Review, *Tala Malaise*, *Hymenoptera*, *Tenthredinidae*, *Tala smithi sp. nov.*, *Tala rufobalteata*

## Abbreviations

EL - Eye lengths

ICD - Inter cencheri distance

ITD - Intertegular distance

MB - Metabasitarsus

OCL - Occulo occipital line

POL - Postocellar line

SCT - Scutellum

TR - Transverse Carina/ridge.

IATS - Inner apical tibial spur

IDMO - Interocular distance at level of median ocellus

LID - Lower interocular distance

OATS - Outer apical tibial spur

OOL - Occulo-ocellar line

SC - Scutum

T - Tegula

## Introduction

Genus *Tala* was erected by Malaise in 1935 by giving a footnote only. No other separate account of this genus is available. Only the holotype and original description of *Siobla rufobalteata* Cameron give some information regarding the characters of this genus. With the addition of a new species from India now this genus is represented by two species. The generic characters have been redefined in this paper.

### Genus *Tala* Malaise, 1935

**Genus diagnosis:** Clypeus with 3 protruding, triangular teeth, the middle of these much longer and larger than lateral ones. Antenna strongly incrassated towards the middle; pedicellus twice as long as it is broad at the apex and only little shorter than scapus. The front wing with four cubital cells; basalis meets subcosta close to the base of cubitus; the anal cell with long oblique crossvein, the hind wing with one closed middle cell. Malar space linear; the hind metatarsus mostly longer than the following tarsal joints combined; head narrowing behind the

eyes. Basal lobe of the claw sharply separated by a deep incision from the apical and subapical teeth.

### *Tala rufobalteata* (Cameron)

(Fig. 1, 2, 3)

*Siobla rufobalteata* Cameron, 1907. Ann. Mag. Nat. Hist. London Ser. 7.19 p.167.

*Tala rufobalteata* Malaise, 1935. Ark. Zool. Stoc., 27 A no 9. p.25 (Type examined)

### Material examined:

**Holotype:** Female bearing slips, Type B.M. TYPE, HYM, 1.370; Cameron Coll, 1909-182; *Siobla rufobalteata*, Cam. type, Tenasserim; Upper Tenasserim. Yunzalia Valley, 11.94 C.T. Bingham.

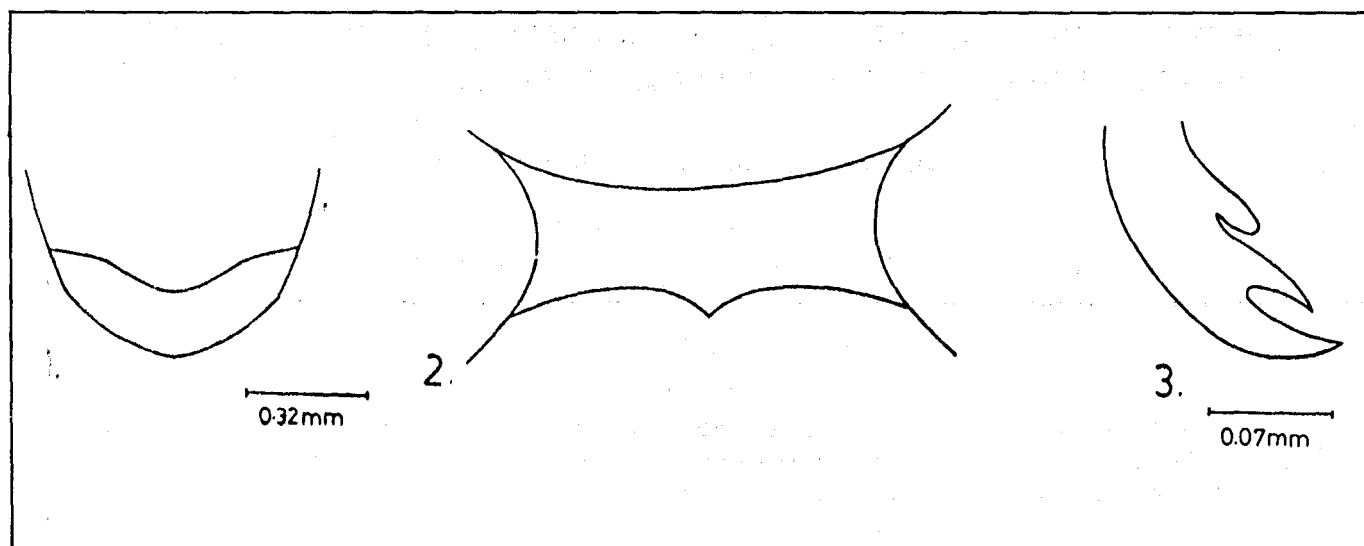
**Distribution:** Myanmar.

**Population variation:** Single specimen (type) examined.

**Remarks:** The studied specimen (holotype) was borrowed from

Received 7 December 1998;

Accepted 1 April 1999



Figures 1 - 3. *Tala rufobalteata*. 1. Clypeus and labrum; 2. Hypogium; 3. Tarsal claw

BMNH, London. The specimen is not in a good condition as the antennae and some parts of legs are missing. The species is characterised by not carinated mesoscutellum and indistinct lateral furrows.

**Female:** Length 8.0mm. Body black, dark brown are: clypeus; propodeum; Tergites 2-6 along with deflexed sides luteous. Legs dark brown, whitish are: trochanters along with adjoining parts of coxa and femora; broad outer stripe on tibiae. Wings hyaline, with an infuscated spot on apical half in forewing, costa stigma and venation dark brown to black.

Antennae (missing in type specimen); clypeus truncate with 3 protruding triangular teeth, middle of these much larger and longer than lateral ones (Fig. 1); labrum broader than long in ratio 3:2 with deflexed, rounded anterior margin; malar space linear; lower margin of eye below level of antennal socket; LID:IDMO:EL=2.0:2.3:2.1; head without postgenal carina; frontal area elevated to level of eyes; supraclypeal and supraantennal pits deep, well marked; antennal furrows marked in anterior half only; median fovea in the form of shallow pit; circumocellar furrow not distinct; inter and postocellar furrows marked; lateral furrows indistinct; postocellar area as long as broad; head narrowing behind eyes; OOL:POL:OCL = 1.5:1.0:1.8; mesoscutellum slightly elevated, its appendage not carinate; ICD:ITD = 1.0:4.5; mesepisternum obtusely raised without carina or acute apex; tarsal claw (Fig. 3) with long apical and slightly shorter subapical teeth, basal lobe present; metabasitarsus longer than following joints combined (broken): IATS:MB:OATS = 1.5:5.0:1.1.

Head and thorax distinctly and densely punctured (appendage with large, deep punctures); abdomen impunctate. Because of

the loan conditions the authors were not allowed to dissect out the lancet from the Type specimen. Hypopygium as in Fig. 2

**Male:** Unknown.

***Tala smithi* sp. nov.**

(Fig. 4, 5, 6, 7, 8, 9, 10, 11.)

**Material examined:**

**Holotype:** Female, West Bengal, Darjeeling - 2800M, 2.5.1986, Coll. M.S. Saini.

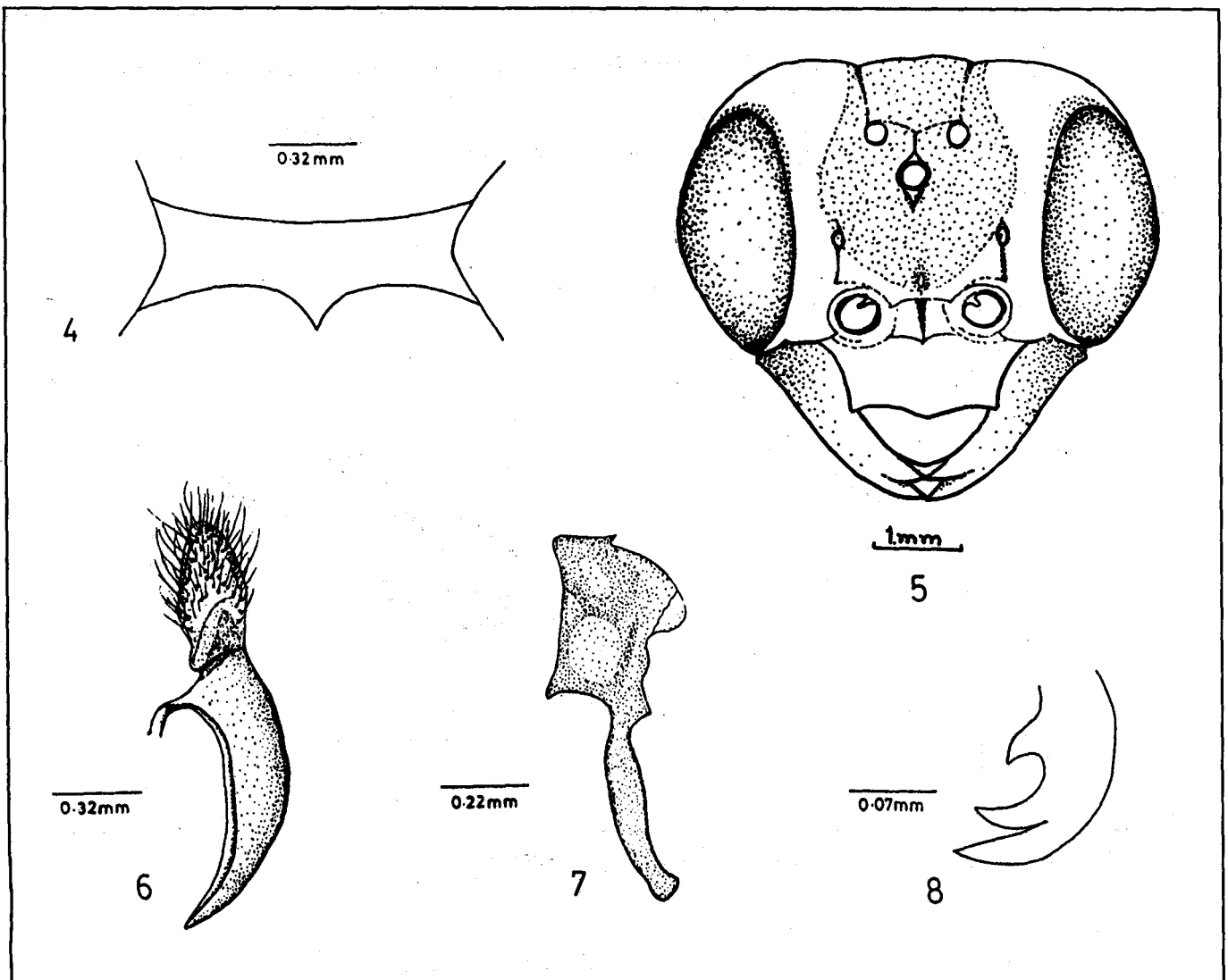
**Paratype:** 200 West Bengal, Darjeeling - 2800M, 2.5.1986, Coll. M.S. Saini.

**Distribution:** West Bengal, India.

**Population variation:** All specimens alike.

**Remarks:** Genus *Tala* was erected by Malaise 1935, in the key for *Siobla* by giving a foot note only. No other account of this genus is available. The studied specimens run smoothly in Malaise's 1963 Key to Genera of the World. The holotype of *Tala rufobalteata* (Cameron) was borrowed from BNMH, London and after comparison the studied specimens were found to be totally different from type specimen of *Tala smithi* sp. nov. This is a first report of genus *Tala* from India. The new species is characterised by elevated mesoscutellum (Fig. 11) with a transverse carina and coarsely punctured head excluding clypeus.

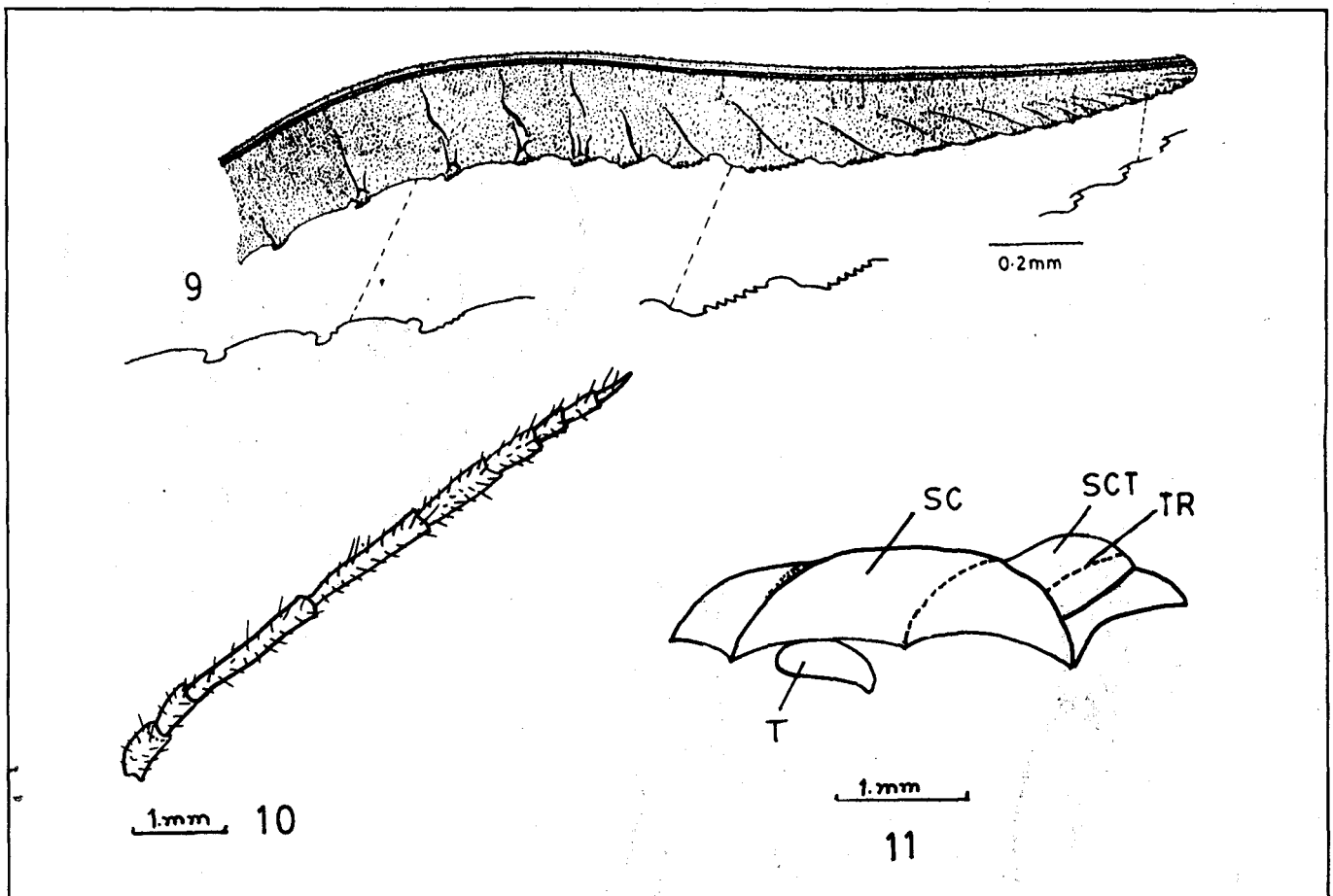
**Etymology:** The species is named after Dr. D.R. Smith of USNM, Washington, a sawfly taxonomist of World fame.



Figures 4 - 8. *Tala smithi* sp. nov. 4. Hypogium; 5. Head (front view); 6. Gonoforceps; 7. Penis valve; 8. Tarsal claw

**Female:** Average length, 10.0 mm. Body pale yellow, the following are black: antennal segment 1-4; basal 1/3 of segment 5; tip of mandible; frontal spot covering median fovea but leaving supraantennal tubercle not touching eyes but reaching hind margin of head lateral to post ocellar area; narrow stripe along eyes on temple; propodeum; dorso medical spot on tergite 2; tergites 4-8 except deflexed lateral sides of 5 entirely lateral side of tergite 9; thorax reddish brown with brown anterior margin of pronotum. Brownish spot broad on supraclypeal area. Legs fulvous, coxae of pro and mesolegs except tip; base of profemur and most of mesofemur, dark brown with following parts black: extreme tip of mesotibia; metafemur except extreme base; apical 1/3 of metatibia; basal 1/5 of meso and metabasitarsus except extreme base; 2 apical tarsal segments in meso and metalegs. Wings infumated, costa stigma and venation dark brown to black.

Antenna (Fig. 10) incrassated in middle, 9 segmented, 2.5x head width. Scape and pedicel longer than broad, segment 3 and 4 in ratio 11:9; 4 apical segments subequal in length; clypeus (Fig. 5) truncate with 3 teeth, middle of these larger than lateral ones, labrum broader than long in ratio 2:1 with deflexed, rounded anterior margin; malar space linear; lower margin of eye below level of antennal socket; LID:IDMO:EL = 2.0:2.6:2.6; head without postgenal carina; frontal area elevated to level of eyes; supraclypeal pit deep; supraantennal pit broad and shallow; antennal furrows not marked, indistinct; mediana fovea like a shallow pit between antennae; circum and interocellar furrows distinct, well marked; postocellar furrow shallow; lateral furrows deep, well marked and diverging posteriorly; postocellar area as long as broad; head narrowing behind eyes (Fig. 5); OOL:POL:OCL = 2.0:1.0:2.0; mesoscutellum (Fig. 11) elevated with distinct transverse carina, its appendage not carinate; ICD:ITD



Figures 9 - 11. *Tala smithi* sp. nov. 9. Lancet; 10. Antenna; 11. Mesonotum (lateral aspect)

= 1.0:4.5; mesepisternum obtusely raised without carina or acute apex; tarsal claw (Fig. 6) with a long apical and slightly short subapical teeth, basal lobe present; metabasitarsus longer than following tarsal joints combined in ratio 10:9. IATS:MB:OATS = 1.5:5.0:1.0.

Head except clypeus coarsely punctured; posterior orbits with distinct scattered punctures; thorax distinctly and densely punctured; abdomen polished. Lancet as in Fig. 9, hypopygium as in Fig. 4.

**Male:** Average length 8.5mm. Similar to female except : outside of scape pale (black in female); antennal tip black (pale in female); tergites 5-8 black (4-8 in female); 2nd tergite is dark brown in middle (black in female). Male genitalia: penis valve (Fig. 7), gonoforceps (Fig. 6).

**Key to the species**

- Labrum broader than long in ratio 2:1 lateral furrows deep, well marked; mesoscutellum carinated (Fig.11), OOL:POL:OCL = 2.0:1.0:2.0 ..... *Tala smithi* sp. nov.
- Labrum broader than long in ratio 3:2; lateral furrows indistinct; mesoscutellum not carinated; OOL:POL:OCL = 1.5:1.0:1.8 ..... *Tala rufobalteata* (Cameron)

**Acknowledgements**

The authors are grateful to Dr. Neil D. Springate of BMNH, London (Hymenoptera section) for endowing the holotype of *Tala rufobalteata* and Dr. D.R. Smith of USDA for providing the relevant literature.

**References**

**Cameron, P. (1907).** On some undescribed phytophagous and parastic Hymenoptera from the Oriental Zoological Region. *Ann. Mag. Nat. Hist. London Ser. 7.* 19pp. 166-192.  
**Malaise, R. (1935).** Schwedischchinesische wissenschaftliche Expedition nach den nordwestlichen provinzen China 23: Hym. I Tenthredinoidea. *Ark. Zool. Stockholm* 27 A no. 9 1640.  
**Malaise, R. (1963).** Hymenoptera Tenthredinoidea, subfamily Selandrinae. *Ent. Tidskr. Arg.* 84 H, 3-4 pp. 159-215.